

# NATURAL GAS GIS DATA



# NATURAL GAS

## Industry's most complete infrastructure mapping data in a digitally-interactive and vector GIS file format.

The North American pipeline GIS database for natural gas from MAPSearch contains pipeline and related facilities for all commodities associated with the North American natural gas industry: natural gas, LNG, gas liquids, and specialty gases.

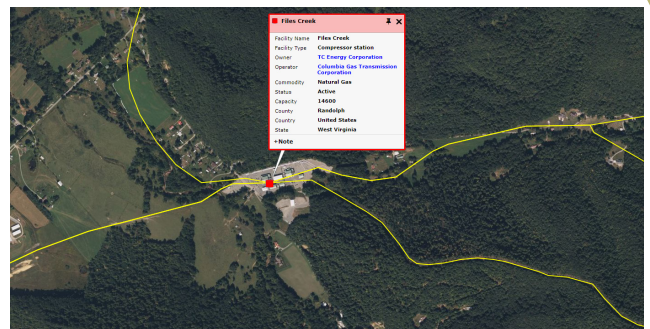
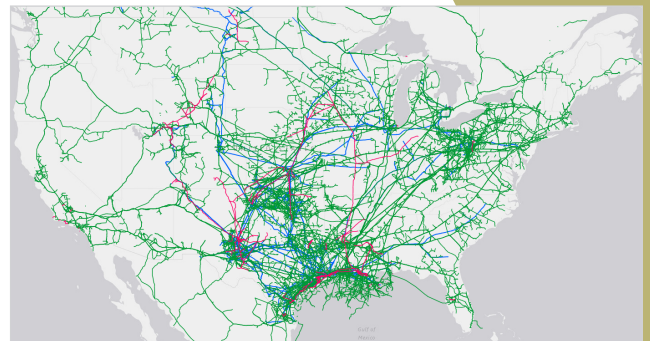
- Full coverage of all pipeline types: transmission, trunkline, gathering
- Comprehensive pipeline database used across the industry
- Accurate spatial and attribute data

## OVER 1 MILLION MILES OF PIPELINE

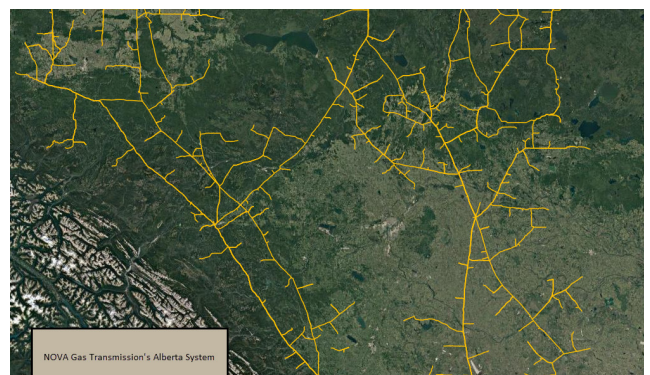
MAPSearch's reference standard data supports a wide variety of uses:

- Market development and competitive analysis
- Route and environmental remediation planning
- Regulatory filing requirements
- Merger and investment analysis

For over forty years, MAPSearch has been a leader in the energy industry for GIS needs. As a trusted industry source, we have listened to our clients and adapted to their needs and budgets. MAPSearch provides the most value for your GIS dollar. Our product bundles offer you flexible choices at reasonable prices.



MAPSearch uses the latest spatial imagery to provide the utmost spatial accuracy.



# NATURAL GAS GIS DATA

LOCATIONAL ACCURACY | COMPREHENSIVE COVERAGE | ROBUST ATTRIBUTE DATA  
EXCEPTIONAL CUSTOMER SERVICE | QUARTERLY UPDATES

## Customizable licenses to fit your data needs.

### COMMODITY COVERAGE

#### NATURAL GAS:

Natural Gas, LNG

#### NGL/LPG

Butane, Condensate, Ethane, Ethane Plus Mix, Ethylene, Field Grade Butane, Field Grade Butane Mix, Iso-Butane, LLPG, LPG, LPG Mix, Natural Gasoline, Normal Butane, Normal Butane, Mix, Propane, Propane Mix, Refinery Off-Gas

#### SPECIALTY GASES AND OTHER

Acetylene, Ammonia, Brine, Carbon Dioxide, Debutanized Aromatic, Concentrate, Helium, Hydrochloric Acid, Hydrogen, Methanol, Nitrogen, Oxygen, Phosphate, Product Gas, Propylene Oxide, Salt Water, Water

### ATTRIBUTE DATA

- Owner, Operator, Last Owner, Last Operator, Number of Owners, Lease Status
- Primary commodity, Secondary Commodity, Commodity Batch Details
- Pipeline Type, Operating Status, Diameter, Direction of Flow, Affiliation with Gathering System
- Capacities for Facilities
- Spatial and Attribute Update Dates
- Source Map and Digital Imagery Metadata

### FACILITY TYPES

- Bio gas production facilities
- Carbon capture and storage
- Chemical plants
- CO2 processing plants
- Compressor stations
- Delivery points to industrial and power plants
- Distribution/receiving terminals
- Fractionators
- Gas processing plants
- Import/export/dock facilities
- LNG terminals
- Meter stations
- Natural gas marketing hubs
- Offshore platform structures
- Storage/tank farm/terminal
- Truck unloading facilities
- Underground storage
- Wellhead meters

### SUPPLEMENTAL DATA

- North America Basin and Shale Play Boundaries, PADD Districts, EIA Underground Storage Areas, TX RRC Districts
- US Waterbodies, Hydrologic Units, Urban Areas, Hospitals, Railways, Roads, Cities, and Airports
- Mexican and Canadian Cities, Lakes, Ports, Roads, Airports and Railroads

**Please contact us for more information about all of our available GIS data (including Petroleum, Natural Gas, Electric Power) and our web-mapping tool, ENvision.**



POWERED BY  
**ENDEAVOR**  
BUSINESS MEDIA

[sales@mapsearch.com](mailto:sales@mapsearch.com)

800.823.MAPS

[mapsearch.com](http://mapsearch.com)