



# RENEWABLE ENERGY

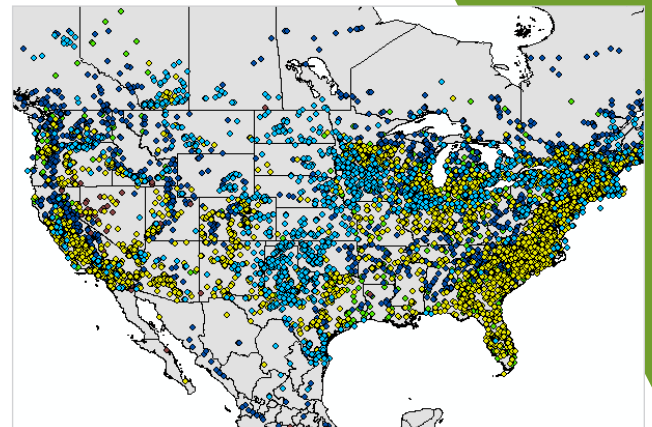
## Industry's most complete infrastructure mapping data in a digitally-interactive and vector GIS file format.

MAPSearch's GIS Data offers access to leading GIS mapping and attribute data for renewable energy resources within North America. As the renewable energy industry grows, the MAPSearch team works to ensure the most spatially accurate and up-to-date renewable energy data by using the latest satellite and aerial sub meter imagery.

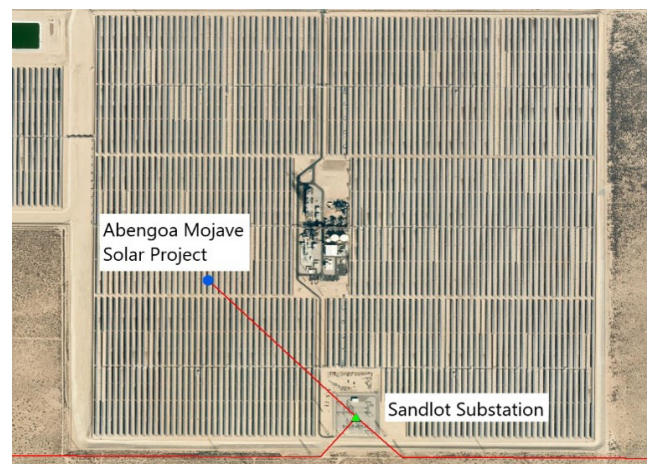
## 460GW+ OF ACTIVE & 280GW OF PROPOSED RENEWABLE CAPACITY & EXPANDING

MAPSearch team continuously researches and maps renewable energy and distribution sources for the GIS database. The GIS Data covers renewable energy sources power plants, substations and transmission lines utilized for power distribution. **The Renewable Energy GIS Data:**

- Assists in project planning, risk evaluation, geographic analysis, comparative analysis and energy analysis within the renewable energy industry.
- Examines the geographic relationships among the various data components to identify new opportunities.
- Incorporates additional layers and proprietary information to increase analytical value.
- Creates powerful visual presentations for project reporting.
- Requires installed GIS software



Our Renewable Energy GIS database contains thousands of renewable power generation facilities.



# RENEWABLE ENERGY GIS DATA

LOCATIONAL ACCURACY | COMPREHENSIVE COVERAGE | ROBUST ATTRIBUTE DATA  
EXCEPTIONAL CUSTOMER SERVICE | QUARTERLY UPDATES

## Customizable licenses to fit your data needs.

### PRIMARY PACKAGE

#### TRANSMISSION LINES

Access to North American transmission lines and line attributes, including owner/operator, line status, voltage(kV), voltage type, mileage, metacode and installation year.

#### SUBSTATIONS

Access to substation layer and attributes, including owner/operator, status, voltage(kV) and metacode.

#### POWER PLANTS

Access to renewable generated power plant layer with attribute data, including owner/operator, status, capacity(MW), metacode, installation year and primary fuel source.

### ADDITIONAL LAYERS

#### PUBLIC POWER

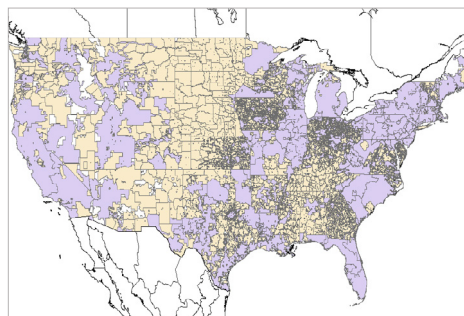
Polygons representing public utility service regions (such as Cooperatives, Rural Electric Area, and Municipalities). Tracked information includes ownership, operator, and control area operator.

#### INVESTOR-OWNED UTILITIES

Contains polygons of all private utility service regions in North America. Includes ownership and operator details.

#### NERC AND ISO

Includes up to date boundaries of both NERC and ISO regions.



**60K SUBSTATIONS & 18K+ POWER PLANTS**

◀ Extensive polygon representation and attribute details of electric service territories



POWERED BY  
**ENDEAVOR**  
BUSINESS MEDIA

Please contact us for more information about all of our available GIS data (including Petroleum, Natural Gas, Electric Power) and our web-mapping tool, ENvision.

[sales@mapsearch.com](mailto:sales@mapsearch.com)

800.823.MAPS

[mapsearch.com](http://mapsearch.com)