



MAPSearch®

NAVIGATING THE NORTH AMERICAN ENERGY INDUSTRY FOR OVER 40 YEARS

Industries:



Petroleum

Natural Gas

Fossil-Fuel Generation

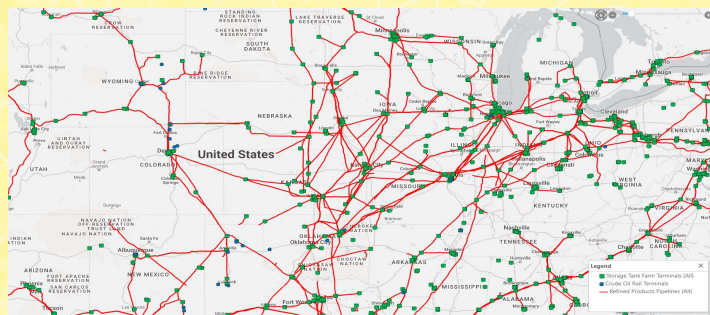
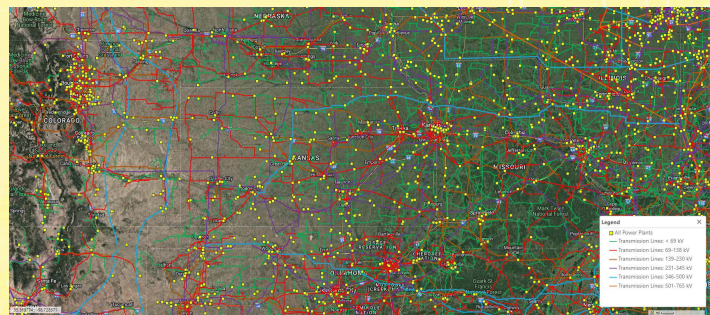
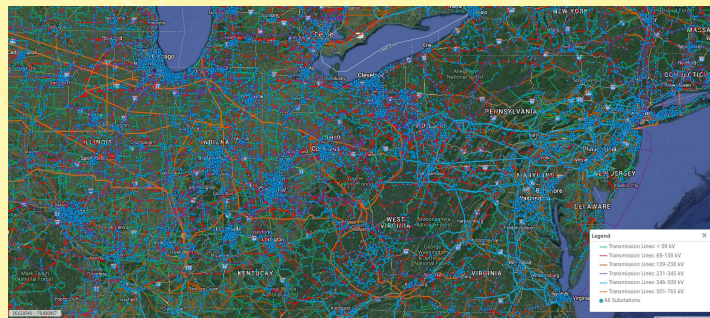
Renewable Energy

Electric Power Transmission

Solutions:

GIS Data

Web-Based Mapping



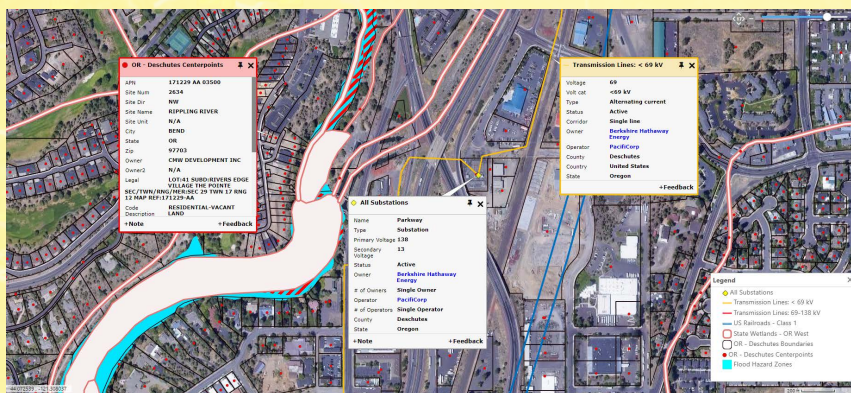
For more information or to request a demo contact:

MAPSearch
800.823.MAPS
sales@mapsearch.com

or visit us online at www.mapsearch.com



ENvision is the next generation of energy mapping technology. Web-based and easy-to-use, ENvision enables anyone to quickly locate, display and analyze energy infrastructure using the same quality data licensed to our GIS customers. ENvision allows you to spend less time and money collecting and navigating the complex world of GIS.



ENvision Solar Professional provides essential information to business and project development professionals, site selection, executives, working in the Solar and Renewable Energy sector.

Attribute Data Includes:

- Full MAPSearch datasets
- Electric Transmission Lines - Coverage for the US/North America
- Substations Coverage - for US/ North America
- Power Plants - for US/ North America
- Service Territories - for US Investor Owned Utilities and Public Power entities
- Parcel Data - for over 3,000 US Counties and a 140 Million Parcels
- Wetlands data – for US
- FEMA Flood Hazard Zones – for US

Features:

- Easy-to-use, flexible, customizable and robust platform
- Browser friendly - no special software required
- Share custom maps and layers with colleagues or keep them private
- Search, sort and filter data
- Use built-in data or securely import your own
- Perfect for last minute mapping requests
- Over 20 base maps to choose from

For more information or to request a demo contact:

MAPSearch
800.823.MAPS
sales@mapsearch.com

or visit us online at www.mapsearch.com